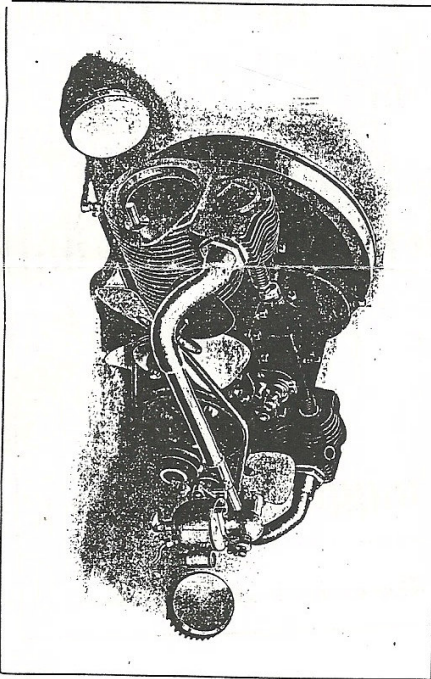


A register for Sears cars to help owners date their cars more accurately, to find parts, and sell cars. Subscription is \$1. per year; published quarterly by Hayden Shepley Box 481, Toughkenamon, PA 19374. 610-268-2349. (Summer address).

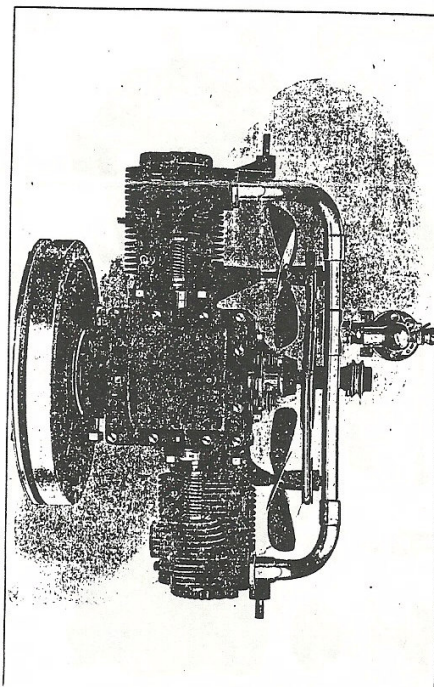
This issue features the "staggared" or "offset" engine available about 1911 but not advertised as far as I know. These photos must be of a prototype engine, as the "breather" is not shown.



16 SEARS, ROEBUCK AND CO., CHICAGO, ILLINOIS

Supplement "B"
to
**Sears Motor Car
Repair List**

Sears, Roebuck and Co., Chicago, Ill.



17 SEARS, ROEBUCK AND CO., CHICAGO, ILLINOIS

SEARS, ROEBUCK AND CO., CHICAGO, ILLINOIS

IMPORTANT NOTICE

THIS supplement covers parts for motor illustrated on opposite page. When ordering parts refer to this supplement only, and always give the catalog number of the part.

Always give the number of your car when ordering repair parts. This is important and will enable us to refer to a complete set of parts for your car and to send exactly the right parts.

Address your letter to our Motor Car Department.

Dept. 21
Sears, Roebuck and Co.,
Chicago, Ill.

Send money by postoffice money order, express money order, bank draft or cash by registered letter. If you have a checking account, a bank you may send us your personal check. The best way to send money is by postoffice or express money order.

For convenience in ordering parts by wire, we have arranged a telegraph code, giving each part a separate code value. No. 213231. Sample telegram will order several different parts accurately; for instance, to order an engine just wire as follows:

Sears, Roebuck and Co., Dept. 21,
Chicago, Ill.
Rush Mclady Part Fifteen Hundred.
John Jones, Jonesville, Iowa.

Shipping instructions by wire:
Mailing Department
Sears, Roebuck and Co., Dept. 21,
Chicago, Ill.

Code Word
M.A.I.L. Please send at once by mail, postpaid, to my address below.
E.X.P.R.E.S.S. Please send at once by express, C. O. D., to my address below.
P.O. M.O. Please send at once by postoffice money order, C. O. D., to my address below.
R.U.S.H. Please send at once by registered letter, C. O. D., to my address below.
Always order by mail when possible. It is safer. Telegrams occasionally get the message twisted and words misspelled.

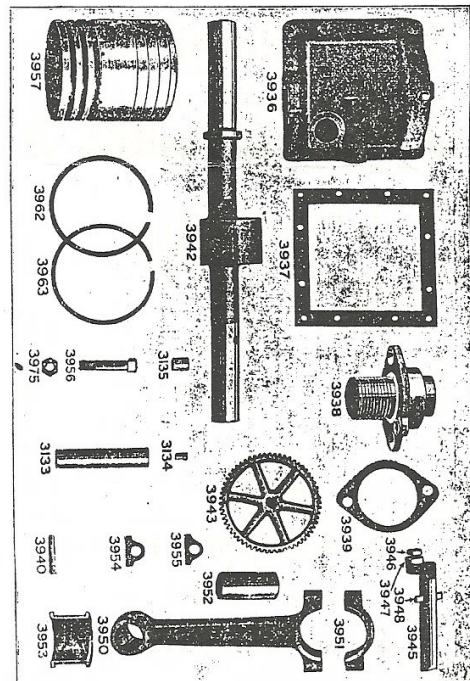
According to my list of "Searsheet" subscribers, three people have car number 2632 with letters H,K, and X! I wish Bill Hossfield, David Kolzow, and Don Silbert would please check their frame numbers to see if their numbers are 2632. If they are all correct, it could mean that there were many more cars built than was supposed. I recently had a nice long phone conversation with a member of the Sears family who is a literature collector! More on him later.

SEARS, ROEBUCK AND CO. CHICAGO, ILLINOIS

| Order No. | NAME | Code Word | Price Each |
|-----------|--|-----------|------------|
| 21B3928 | Crank Shaft Gear | Morlon | \$3.25 |
| 21B3929 | Gear Key | Moorman | 1.00 |
| 21B3930 | Adjusting Nut Washer | Molem | 1.00 |
| 21B3931 | 3-16x3/4-inch Cam Pin | Mosh | .35 |
| 21B3932 | Fly Wheel | Mound | .05 |
| 21B3933 | Fly Wheel Key | Mouth | 7.00 |
| 21B3934 | Ball Thrust Bearing | Muck | 1.00 |
| 21B3935 | Ball Thrust Bearing | Mud | 5.10 |
| 21B3936 | Prison Lock 1/2-inch Round Head Machine Screw | Mudky | 2.75 |
| 21B3937 | Crank Case Cover | Muete | .02 |
| 21B3938 | Crank Case Cover Gasket | Mush | 5.25 |
| 21B3939 | 1/2-inch U. S. S. by 1/4-inch Hexagon Head Cap Screw | Mishap | 1.00 |
| 21B3940 | 1/2-inch Pipe Plug | Mush | .05 |
| 21B3941 | 1/4-inch Pipe Plug | Mute | .05 |
| 21B3942 | Front Cam Shaft Bearing Gasket | Mure | .85 |
| 21B3943 | Front Cam Shaft Bearing Gasket | Murid | .05 |
| 21B3944 | To 1 1/2-inch Flat Head Machine Screw | Mush | .05 |
| 21B3945 | To 1 1/2-inch Flat Head Machine Screw | Mush | .05 |
| 21B3946 | Cam Shaft | Mush | 7.50 |
| 21B3947 | Cam Shaft | Mush | 4.80 |
| 21B3948 | Cam Shaft | Mush | 2.75 |
| 21B3949 | No. 3 Woodruff Key | Mush | 1.00 |
| 21B3950 | No. 3 Woodruff Key | Mush | .45 |
| 21B3951 | No. 3 Woodruff Key | Mush | .45 |
| 21B3952 | Valve Plunger, assembled | Negro | 1.75 |

SEARS, ROEBUCK AND CO. CHICAGO, ILLINOIS

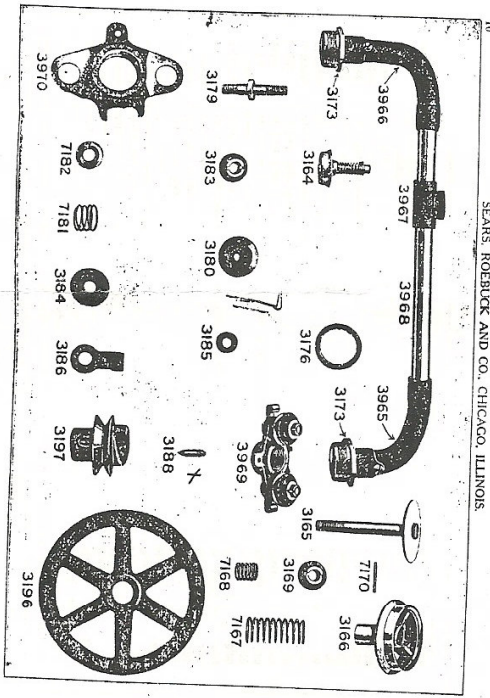
| Order No. | NAME | Code Word | Price Each |
|-----------|--|-----------|------------|
| 21B3945 | Valve Plunger | Nepher | \$1.50 |
| 21B3946 | Adjusting Screw | Nerve | 1.00 |
| 21B3947 | Valve Plunger Locknut | Nick | .10 |
| 21B3948 | Valve Plunger Pin | Nick | .05 |
| 21B3949 | Connecting Rod, assembled, with Wrist Pin Bearing, without W. M. Bearing | Nimby | 4.35 |
| 21B3950 | Connecting Rod | Nimby | 3.35 |
| 21B3951 | Connecting Rod Cap | Noon | .45 |
| 21B3952 | Wrist Pin | Noon | .45 |
| 21B3953 | Connecting Rod Bush | Noon | .45 |
| 21B3954 | Connecting Rod Shim, 3/32-inch thick | Nugget | .05 |
| 21B3955 | Connecting Rod Shim, .005-inch thick, Set of 12 | Nun | .80 |
| 21B3956 | Connecting Rod Nut | Oash | .12 |
| 21B3957 | Connecting Rod Nut | Oash | .12 |
| 21B3958 | 5/32x3/4-inch Cam Pin | Oash | .01 |
| 21B3959 | Prison Lock, assembled, with Ring Pins | Ocean | 3.00 |
| 21B3960 | Prison Lock | Ode | 2.95 |
| 21B3961 | Prison Ring Pin, 3/32x1/4 inch | Ode | .35 |
| 21B3962 | Prison Ring Pin, 3/32x1/4 inch | Ode | .35 |
| 21B3963 | Wrist Pin Key | Omat | .35 |
| 21B3964 | Wrist Pin Key | Omat | .35 |
| 21B3965 | Prison Ring, front | Omat | .05 |
| 21B3966 | Prison Ring, middle | Omat | .05 |
| 21B3967 | Prison Ring, middle | Omat | .05 |
| 21B3968 | Inake Valve, assembled | Pain | 1.50 |



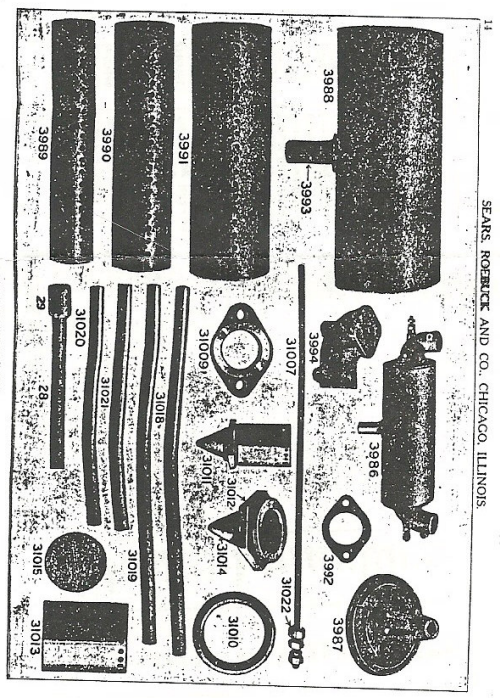
SEARS, ROEBUCK AND CO. CHICAGO, ILLINOIS

| Order No. | NAME | Code Word | Price Each |
|-----------|--------------------|-----------|------------|
| 21B3958 | Inake Valve | Paly | \$0.45 |
| 21B3959 | Inake Valve Spring | Penny | .85 |
| 21B3960 | Inake Valve Spring | Penny | .85 |
| 21B3961 | Inake Valve Spring | Penny | .85 |
| 21B3962 | Inake Valve Spring | Penny | .85 |
| 21B3963 | Inake Valve Spring | Penny | .85 |
| 21B3964 | Inake Valve Spring | Penny | .85 |
| 21B3965 | Inake Valve Spring | Penny | .85 |
| 21B3966 | Inake Valve Spring | Penny | .85 |
| 21B3967 | Inake Valve Spring | Penny | .85 |
| 21B3968 | Inake Valve Spring | Penny | .85 |
| 21B3969 | Inake Valve Spring | Penny | .85 |
| 21B3970 | Inake Valve Spring | Penny | .85 |
| 21B3971 | Inake Valve Spring | Penny | .85 |
| 21B3972 | Inake Valve Spring | Penny | .85 |
| 21B3973 | Inake Valve Spring | Penny | .85 |
| 21B3974 | Inake Valve Spring | Penny | .85 |
| 21B3975 | Inake Valve Spring | Penny | .85 |
| 21B3976 | Inake Valve Spring | Penny | .85 |
| 21B3977 | Inake Valve Spring | Penny | .85 |
| 21B3978 | Inake Valve Spring | Penny | .85 |
| 21B3979 | Inake Valve Spring | Penny | .85 |
| 21B3980 | Inake Valve Spring | Penny | .85 |
| 21B3981 | Inake Valve Spring | Penny | .85 |
| 21B3982 | Inake Valve Spring | Penny | .85 |
| 21B3983 | Inake Valve Spring | Penny | .85 |
| 21B3984 | Inake Valve Spring | Penny | .85 |
| 21B3985 | Inake Valve Spring | Penny | .85 |
| 21B3986 | Inake Valve Spring | Penny | .85 |
| 21B3987 | Inake Valve Spring | Penny | .85 |
| 21B3988 | Inake Valve Spring | Penny | .85 |
| 21B3989 | Inake Valve Spring | Penny | .85 |
| 21B3990 | Inake Valve Spring | Penny | .85 |
| 21B3991 | Inake Valve Spring | Penny | .85 |
| 21B3992 | Inake Valve Spring | Penny | .85 |
| 21B3993 | Inake Valve Spring | Penny | .85 |
| 21B3994 | Inake Valve Spring | Penny | .85 |
| 21B3995 | Inake Valve Spring | Penny | .85 |
| 21B3996 | Inake Valve Spring | Penny | .85 |
| 21B3997 | Inake Valve Spring | Penny | .85 |
| 21B3998 | Inake Valve Spring | Penny | .85 |
| 21B3999 | Inake Valve Spring | Penny | .85 |
| 21B4000 | Inake Valve Spring | Penny | .85 |

I'm leaving for my summer address May 10, but won't get there until May 22 as I will be showing my Sears at Winchester, VA May 13 (as usual) will be on the pre-16 tour based in Kingston, May 17-19, and will be at Rhinebeck 20-21; the Exton, PA Mall show May 28; the VMCCA 1 & 2 cylinder hub tour based in Strasburg, PA (25 miles from my home) June 11-16, and Macungie Memorial Park, PA August 4-6. Do any of you who'vend'at Hershey (in Oct.) have a tent that we could meet in, October 6? My Sears and I will arrive there Oct. 3.



SEARS, ROEBUCK AND CO. CHICAGO, ILLINOIS



SEARS, ROEBUCK AND CO. CHICAGO, ILLINOIS

| Catalog No. | NAME | Code Word | Price Each |
|-------------|---|-----------|------------|
| 21B30 | 1-1/8x3/4-inch Center Pin..... | Perch | \$0.01 |
| 21B31 | Contact Pin..... | Perch | .10 |
| 21B318 | 5/16-inch 13x3/4-inch U. S. S. Low Head Set Screw, cup point..... | Permit | .03 |
| 21B3186 | Fan Pulley..... | Permit | .88 |
| 21B3187 | Other Pulley..... | Few | .05 |
| 21B32 | No. 2-3/4-inch Taper Pin..... | Pinz | .20 |
| 21B3271 | Fan, assembled, right hand..... | Pignon | .05 |
| 21B3180 | Fan Blade..... | Pignon | .88 |
| 21B3181 | Fan Blade..... | Pignon | .88 |
| 21B34 | 5-3/8x3/4-inch Round Head Rivets, Set of 8..... | Pilot | .10 |
| 21B372 | Fan Shaft..... | Pilpin | .20 |
| 21B3183 | Fan Shaft Collar..... | Pit | .05 |
| 21B3183 | Fan, 3/8x2-inch..... | Pit | .05 |
| 21B3183 | Adm. 3/8x2-inch..... | Pit | .05 |
| 21B3183 | 4x3/4-inch Center Pin..... | Pivot | .15 |
| 21B35 | Knipe Ball Bearing for fan..... | Planet | .01 |
| 21B378 | Fan, assembled, left hand..... | Planet | 1.80 |
| 21B379 | Fan Hub..... | Pile | .01 |
| 21B379 | Fan Hub..... | Pile | .85 |
| 21B3181 | 5-3/8x3/4-inch Round Head Rivets, Set of 8..... | Pilot | .10 |
| 21B34 | Fan Shaft Collar..... | Pilpin | .20 |
| 21B3183 | Fan Shaft Collar..... | Pilpin | .20 |
| 21B3183 | Pin, 4x3/4x1/4-inch..... | Pit | .03 |
| 21B3194 | Adjusting Nut..... | Pivot | .15 |

SEARS, ROEBUCK AND CO. CHICAGO, ILLINOIS

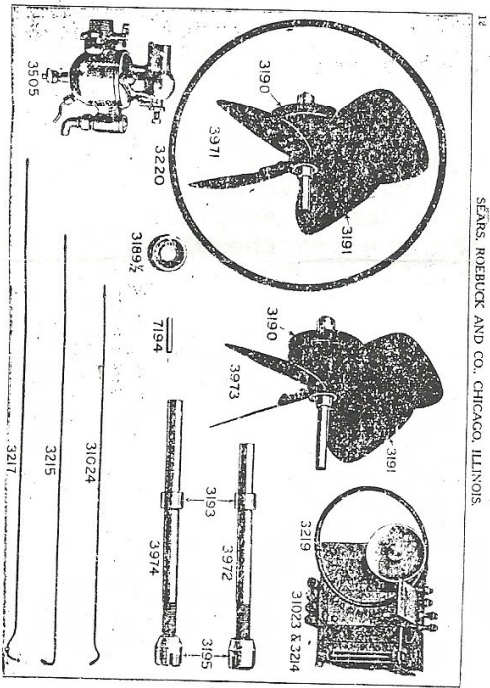
| Catalog No. | NAME | Code Word | Price Each |
|-------------|---|-----------|------------|
| 21B7 | 7-1/4-inch 14 U. S. S. Semi-Finished Hexagon Nut..... | Mift | \$0.02 |
| 21B1 | 7-1/8x1/2x3/32-inch Plain Lock Washer..... | Raft | .02 |
| 21B3109 | Exhaust Pipe Flange..... | Rag | .35 |
| 21B31010 | Exhaust Pipe Flange Gasket..... | Rail | .10 |
| 21B32 | 7-1/8-inch 14x1/2-inch Hexagon Head Cap Screw..... | Rain | .05 |
| 21B33 | 7-1/8x3/4-inch Plain Lock Washer..... | Reason | .02 |
| 21B31018 | Muffler Pipe, left side for Models P and X..... | Recal | .95 |
| 21B31019 | Muffler Pipe, right side for Models P and X..... | Recal | .95 |
| 21B31020 | Muffler Pipe, left side for runabouts..... | Reort | .60 |
| 21B31021 | Muffler Pipe, right side for runabouts..... | Rib | .60 |
| 21B34 | 5-1/8x3/4-inch Square Head Machine Bolt..... | Riot | .02 |
| 21B31011 | Breather, assembled..... | Rival | .85 |
| 21B31012 | Breather, nipple..... | Rival | .40 |
| 21B31013 | Breather Cap..... | Rock | .35 |
| 21B31014 | Strainer, cone..... | Rodent | .15 |
| 21B31015 | Strainer, flat..... | Rogue | .10 |
| 21B3218 | Other Bolt with Hook..... | Ruin | .25 |
| 21B27 | Other Bolt Hook..... | Pocket | .03 |

SEARS, ROEBUCK AND CO. CHICAGO, ILLINOIS

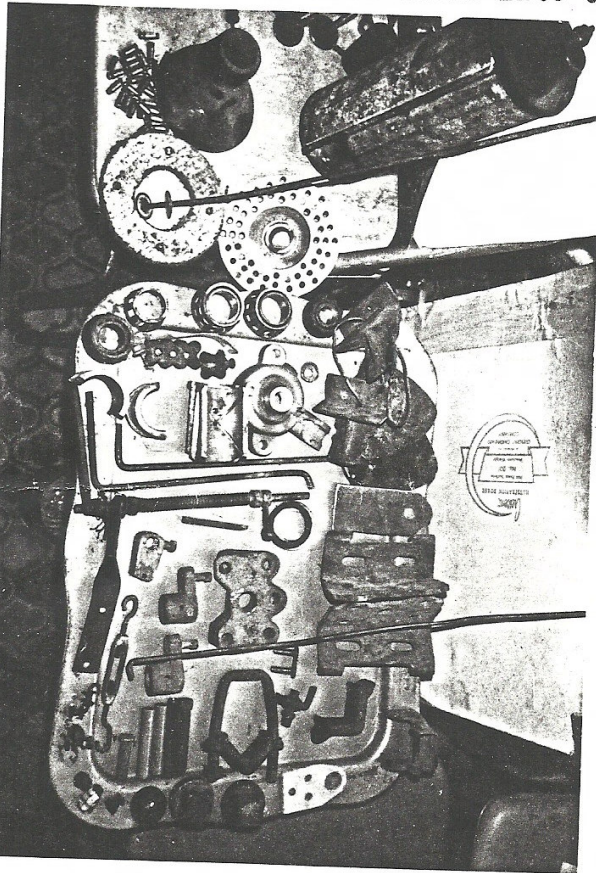
If anyone's travels takes them to Des Moines, I wish they would visit a subscriber in Urbandale that's very close. He is Leonard Overcash, 3115 Ashwood Dr.. Phone 515-276-8631. Is his frame # really 5025? Please take a clear photo of the design on the outside rear of the seat. Its for a future article.

At the annual VMCCA pre-war meet in MT Dora, FL April 1-2, where I principally drove at night by kerosine, I got a catalog of the well known Egge Machine Co. For Sears, their 68 page catalog lists pistons, rings, wrist pins, exhaust valves, and intake valves! Their address is 11707 Slauson Ave., Santa Fe Springs, CA 90670. Phone 310-945-3419. They have numerous parts for dozens of cars from 1900 up and say that they will make parts.

The photo below is of all the extra parts that came with my Sears three years ago. I know very few of their names. I'll sell any piece for its postage expense. Send a copy of the photo with an arrow to the part. As these parts are in Florida, delivery will have to wait until late October.



SEARS, ROEBUCK AND CO. CHICAGO, ILLINOIS



SEARS, ROEBUCK AND CO. CHICAGO, ILLINOIS

| Order No. | NAME | Code Word | Price Each |
|-------------|--|-----------|------------|
| 21B25 | 1/2x3/4-inch Cotter Pin..... | Planet | \$0.01 |
| 21B3189 1/2 | Knife-Blade Bearing for fan..... | Planet | .20 |
| 21B26 | 3/16-inch 18 U. S. S. by 1/2-inch Set Screw..... | Planet | .20 |
| 21B3280 | Fan Belt With Hook, 3 1/2 inches long..... | Planet | .20 |
| 21B27 | Fan Belt Hook..... | Planet | .03 |
| 21B3005 | Ignition Switch, Carburetor, Model D..... | Planet | 8.00 |
| 21B3182 | Ignition Switch, complete, for runabouts..... | Planet | 7.50 |
| 21B3215 | Oil Feed Pipe, 3 1/2 inches long..... | Planet | .30 |
| 21B3216 | Oil Feed Pipe, 4 1/2 inches long..... | Planet | .30 |
| 21B3217 | 1/2-inch Black Pipe Coupling..... | Planet | .30 |
| 21B3218 | Muffler, assembled..... | Planet | .60 |
| 21B3219 | Muffler, Shell..... | Planet | .60 |
| 21B3220 | Center Tube..... | Planet | .40 |
| 21B3221 | Second Tube..... | Planet | .40 |
| 21B3222 | Muffler End Cap..... | Planet | .50 |
| 21B3223 | Muffler Outlet..... | Planet | .50 |
| 21B3224 | Muffler Elbow Gasket..... | Planet | .20 |
| 21B3225 | Muffler, 1 1/2-inch Hecagon Head Cap Screw..... | Planet | .05 |
| 21B3226 | Muffler, 1 1/2-inch Hecagon Head Cap Screw..... | Planet | .05 |
| 21B3227 | Muffler, 1 1/2-inch Hecagon Head Cap Screw..... | Planet | .20 |
| 21B3228 | Muffler, 1 1/2-inch Hecagon Head Cap Screw..... | Planet | .20 |

5/6/95

Dear John,

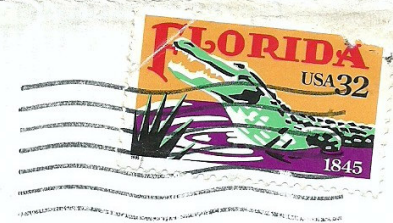
A while ago I asked you for a photo of your Sears body plate #1204. Could you please send me a black & white of the color photo on P.27 in the 'Gazette', I need it for a future 'Sear-sheet' article on body plates. Yours is the only original of the early type. Later on, the wording was changed to 'motor car'. I have a catalog picture showing that, besides your type.

I would like to know the name of the company that your father thinks the first Sears were built by. I have the names of 2 companies that claim that honor. One was in Evansville, Ind; not Evanston, Il! Naturally it took a while for Sears to set up their own shop. How did your Dad hear that serial numbers started at 1000? I don't dispute it. I just have no proof.

How early does your father think Sears had no model (or I guess no serial) numbers? Number 1005 now in Lovettsville, VA has its frame number! Perhaps your father meant the dozen or so proto-types that Mr. Krotz had made previos to him signing the contract with Sears. (see 'Searsheet' No. 2). THESE HAD NO NUMBERS OR BODY NAME PLATES, BECAUSE THEY WERE 'NT SEARS! Its very important that we get the facts straight.



Hayden R Shepley
P O Box 481
Toughkenamon, PA 19374



John J. Daly
1020 N. Central Ave.
Burlington PA 52601

