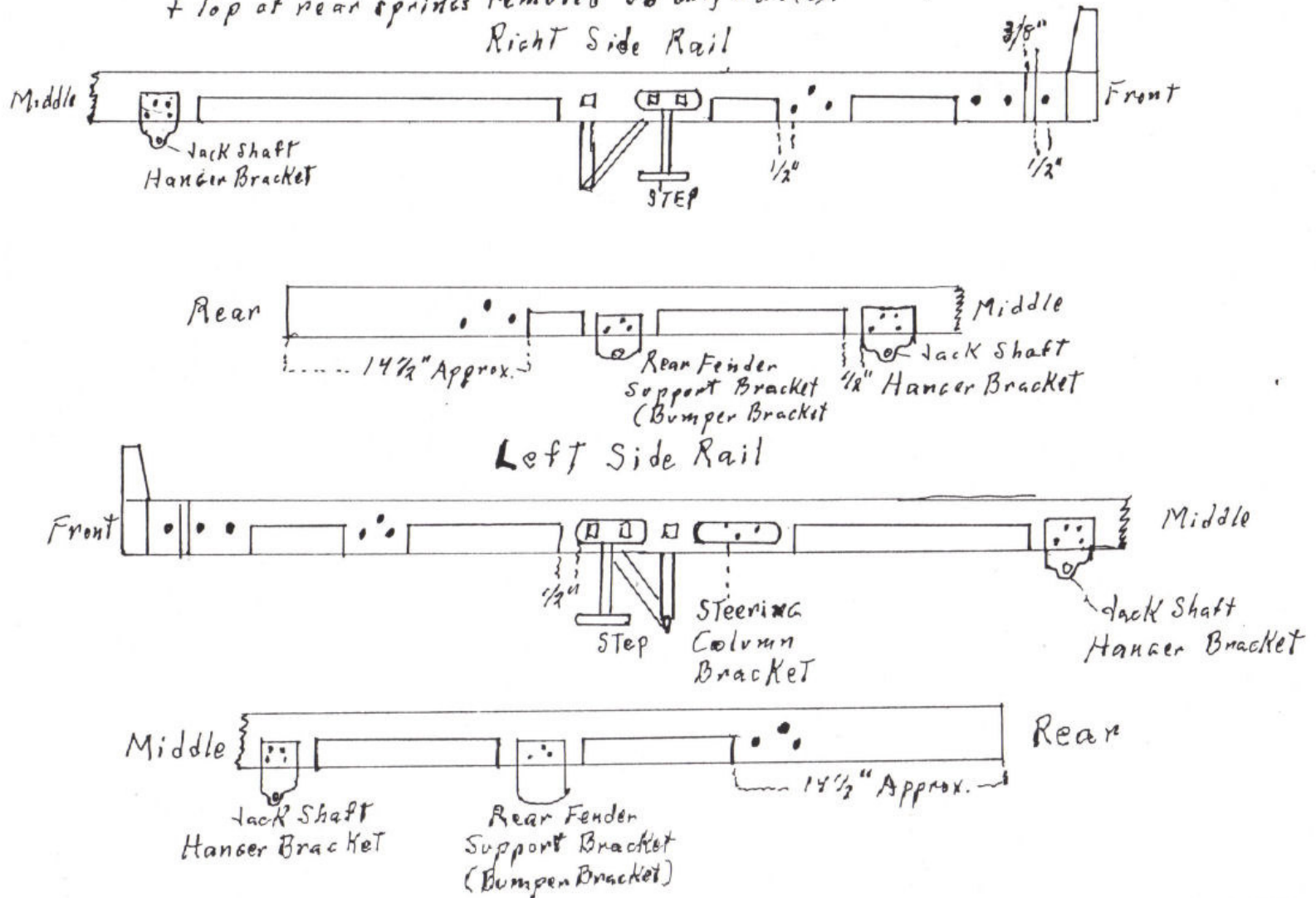


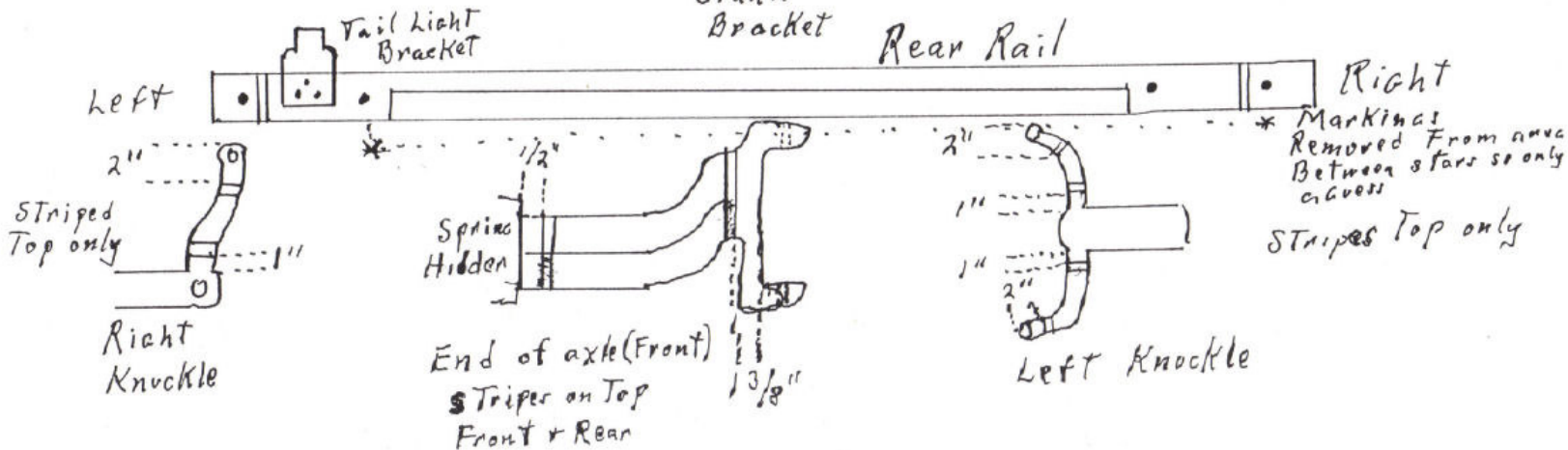
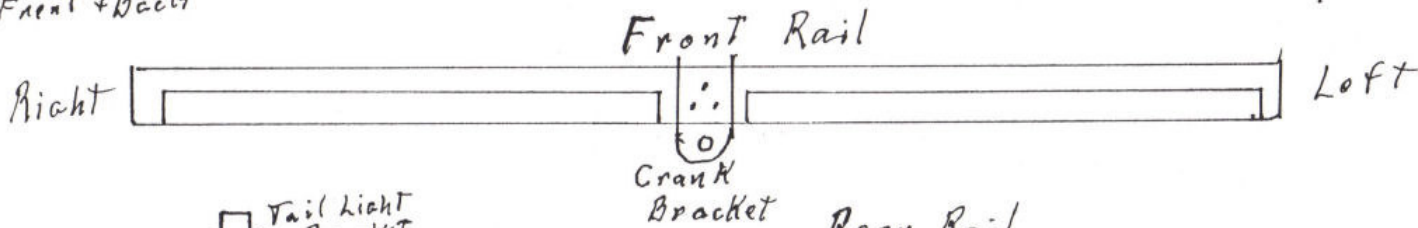
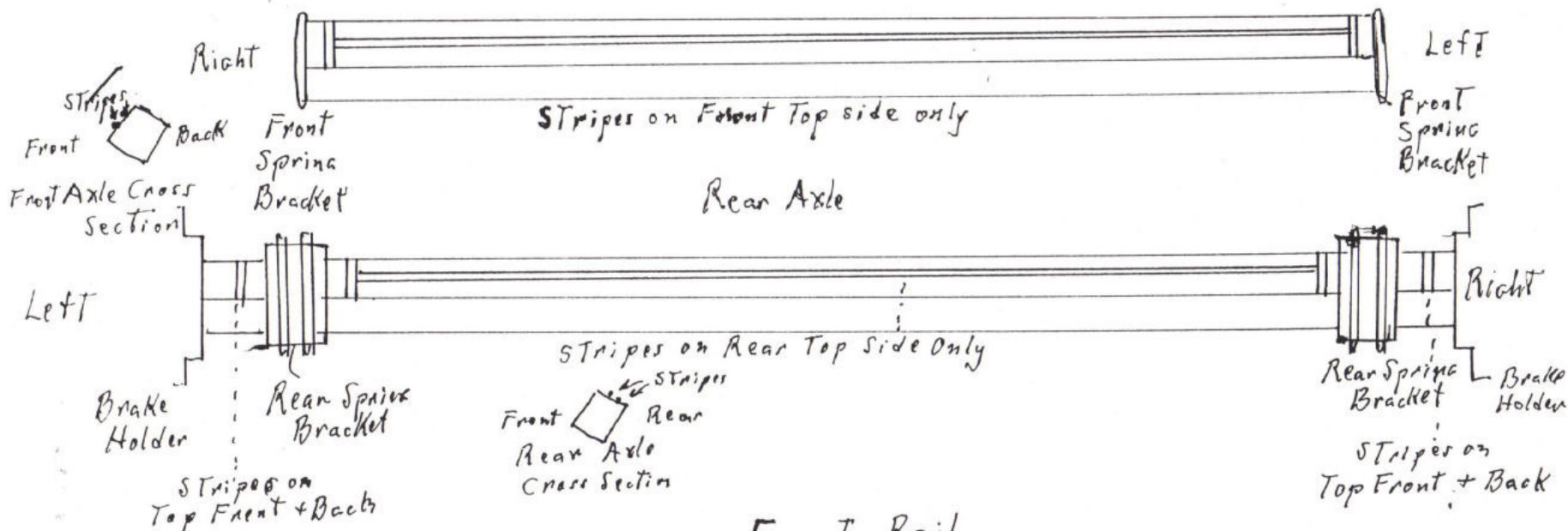
Lop Zimmerman  
 3202 Harford Rd.  
 Baltimore MD  
 21218

# SEARS STRIPING

Copied from original 1909 Sears (1107) Model H. Some changes necessary on Models I, K, L, etc. Running boards. Handstriped so not exact. In general stripes are about  $\frac{1}{2}$ " from bolts, brackets etc. Double stripes are  $\frac{3}{8}$ " apart & all stripes are  $\frac{1}{8}$ " or less wide. Striping shown in black & midway between Top & bottom edge. Drawings definitely not to scale. Area on rear axle & Top of rear springs removed so only a guess.



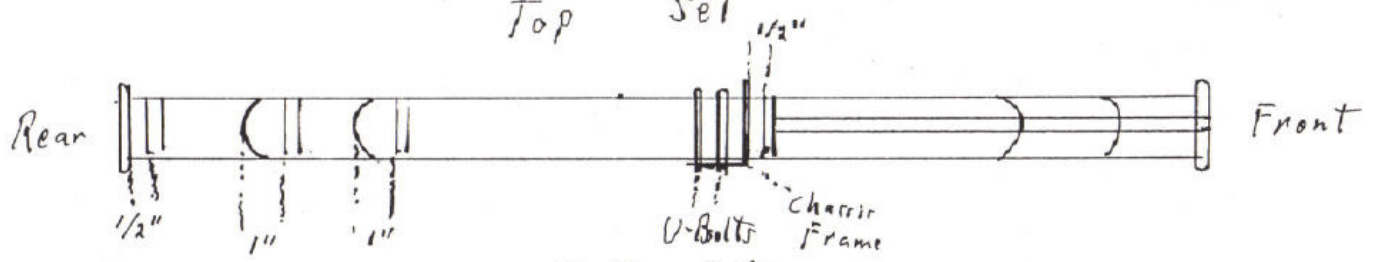
# Front Axle



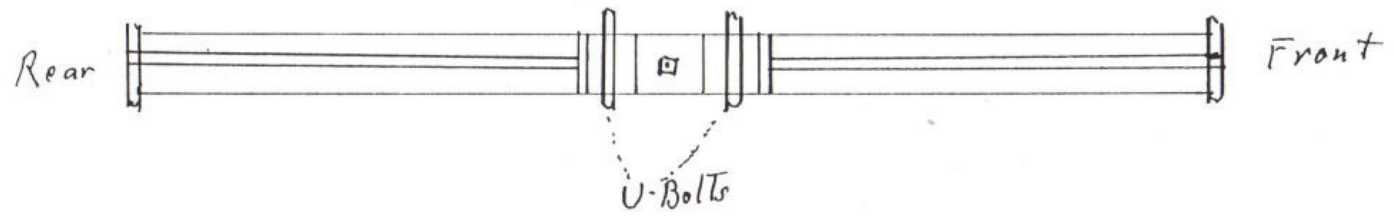
# SPRINGS

Front

Top set

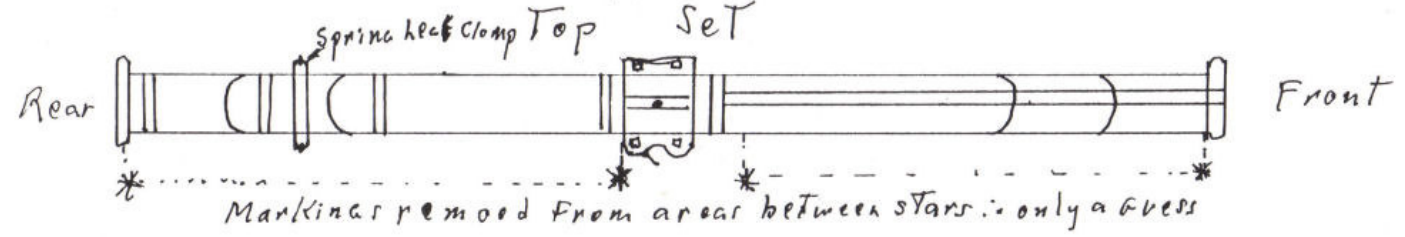


Bottom Set

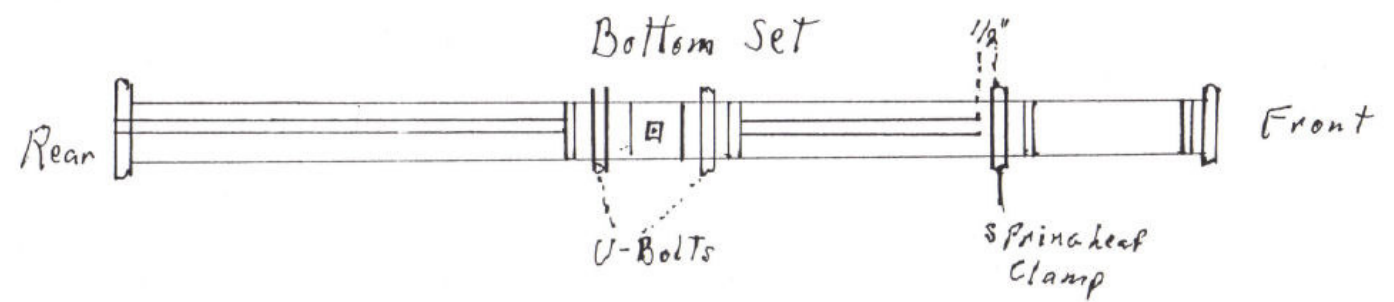


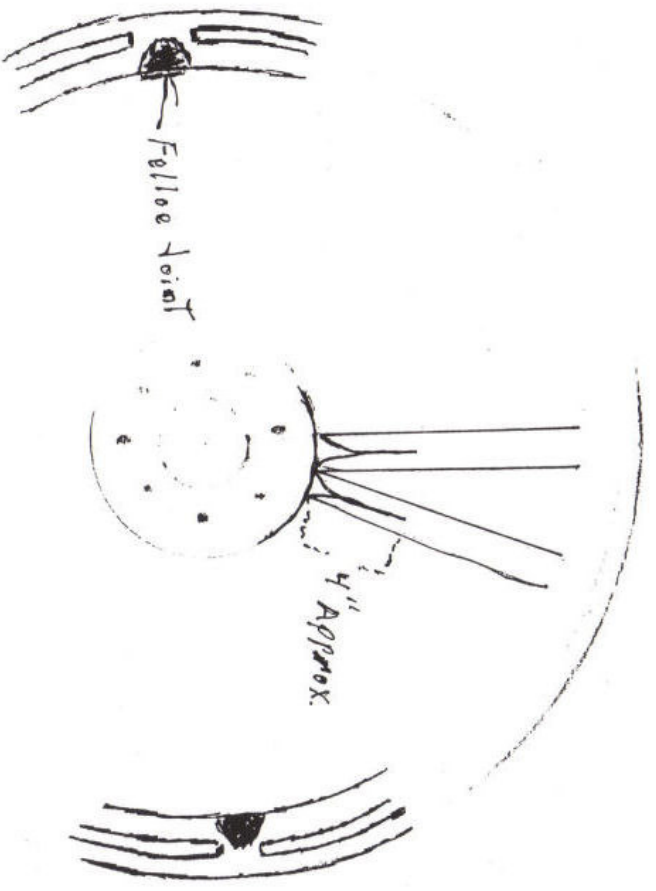
Rear

Top Set



Bottom Set





Time

Felloe

